

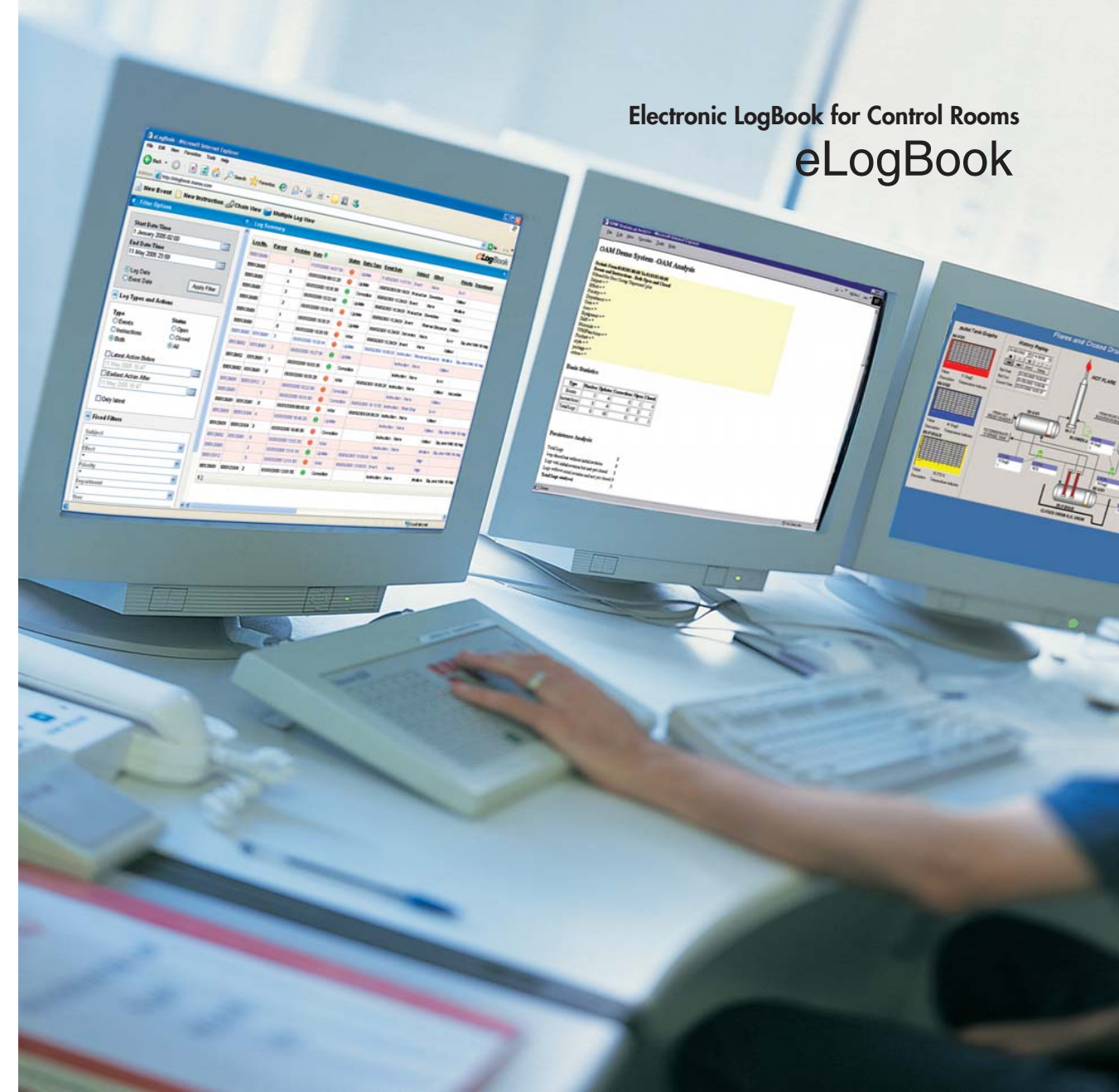
Making critical plant information fully visible is just the beginning of the vigilant cycle

eLogBook is a core component of Yokogawa's VigilantPlant solutions that promise to bring operational excellence to visionary plants, creating an environment where plant personnel can See Clearly, Know in Advance, and Act with Agility.



VigilantPlant excels at bringing out the best in your plant and your people - keeping them fully aware, well informed and ready to face the next challenge.

Electronic LogBook for Control Rooms
eLogBook



eLogBook

A Yokogawa Commitment to Industry

vigilance[®]



What does Yokogawa **vigilance** mean to the future of your business? **Quality**. Through products that are built from the ground up and tested to the last hour, you're ensured continuous operation and more uptime. **Innovation**. Your business will benefit from new insights and capabilities, bringing true predictability to your process. **Foresight**. As the market changes, you'll have solutions that give you the continuity and flexibility to plan ahead and grow. Our partners know the difference. With Yokogawa, you can count on a lifetime of plant efficiency, from instrumentation to operation support. Let us be vigilant about your business.

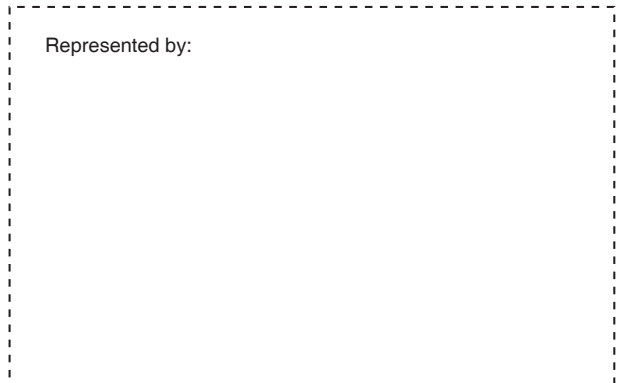
YOKOGAWA ELECTRIC CORPORATION
World Headquarters
9-32, Nakacyo 2-chome, Musashino-shi,
Tokyo 180-8750, JAPAN
<http://www.yokogawa.com>

YOKOGAWA CORPORATION OF AMERICA
2 Dart Road, Newnan, GA 30265-1094, U.S.A.
<http://us.yokogawa.com>

YOKOGAWA EUROPE B.V.
Databankweg 20, 3821 AL Amersfoort, THE NETHERLANDS
<http://www.yokogawa-europe.com>

YOKOGAWA ENGINEERING ASIA PTE. LTD.
5 Bedok South Road, Singapore 469270, SINGAPORE
<http://www.yokogawa.com.sg>

Represented by:



Bulletin GMSC-eLogBook-01

www.yokogawa.com/iis



The Paperless Control Room

eLogBook is an advanced computer-based replacement for traditional control room paper-based log books. It enables the capture of observed and non-automated data within the control room and throughout the plant, making this information available to all computer users across an organisation. eLogBook can be used to:

- **Record and manage both events and instructions**
With its simplified data-entry process requiring minimal keyboard use, eLogBook is ideal for recording and then managing plants events and issuing instructions.
- **Track progress**
Track the progress of 'open' events and monitor all associated actions
- **Create audit trails**
Provide an audit trail for all events
- **Facilitate 'shift-handover'**
- **Annunciate important actions/events**
Automatically Issue alarm messages via email, pager or SMS
- **Manage maintenance**
Initiate maintenance requests through integration with Computer-based Maintenance Management systems
- **Integrate with PIMS systems**
Integrate with Plant Information Systems to provide manually captured process data such as tank dips
- **Integrate with LIMS**
Integrate with Laboratory Information Management Systems to receive lab sample requests/results or request samples be tested

eLogBook provides transparency and information sharing across all key operational departments such as production, maintenance, quality and planning bringing visibility of control room operations to the entire enterprise.

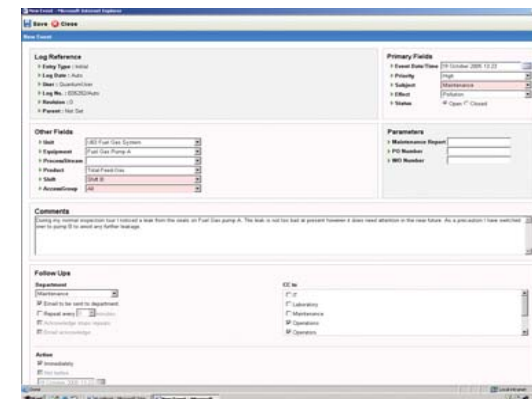


Ease of Use

eLogBook has two user interface environments:

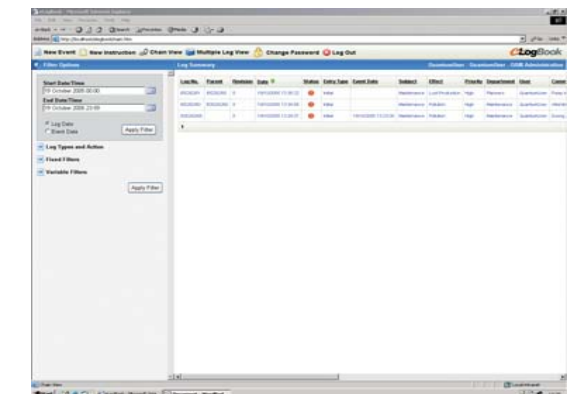
- web-enabled for thin-client deployment
- traditional thick-client when advanced reporting features are required

Both user interfaces provide an intuitive environment for data entry and management with configurable 'drop-down' menus and 'point-and-click' selections to minimise keyboard entry.



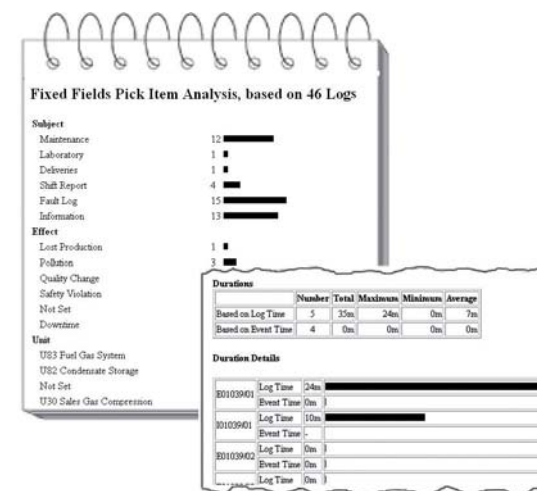
Operator input

An Operator can use eLogBook to create a new log, for example to report a leaking pump. This log will then automatically alert the Maintenance Manager that a product feed pump is leaking. The Maintenance Manager can then issue an instruction to a Maintenance Engineer via email, pager or SMS message to schedule the repair of the pump based on the assigned priority.



Tracking to Completion

The Maintenance Manager can track all open logs to completion providing comprehensive information such as the progress of each log, who is currently working on it and when it is expected to be completed. This information is invaluable for shift handover as it allows the replacement Manager to quickly see the current status of all open logs.



Analysis of Events

Using the filter and report functions the Maintenance Manager is able to analyse team performance to improve proactive and reactive maintenance activities.

Two basic types of reports are available:

- Standalone filtered listings
- Chained view (cause and effect)